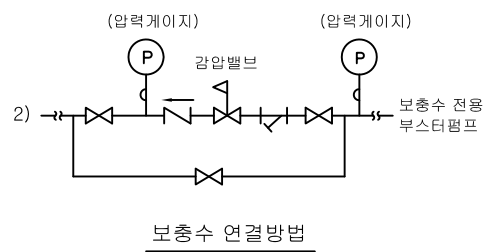
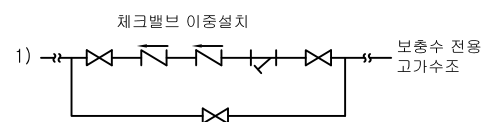


00-80-2X090-ANJ1-2

NOZZLE ORIENTATION

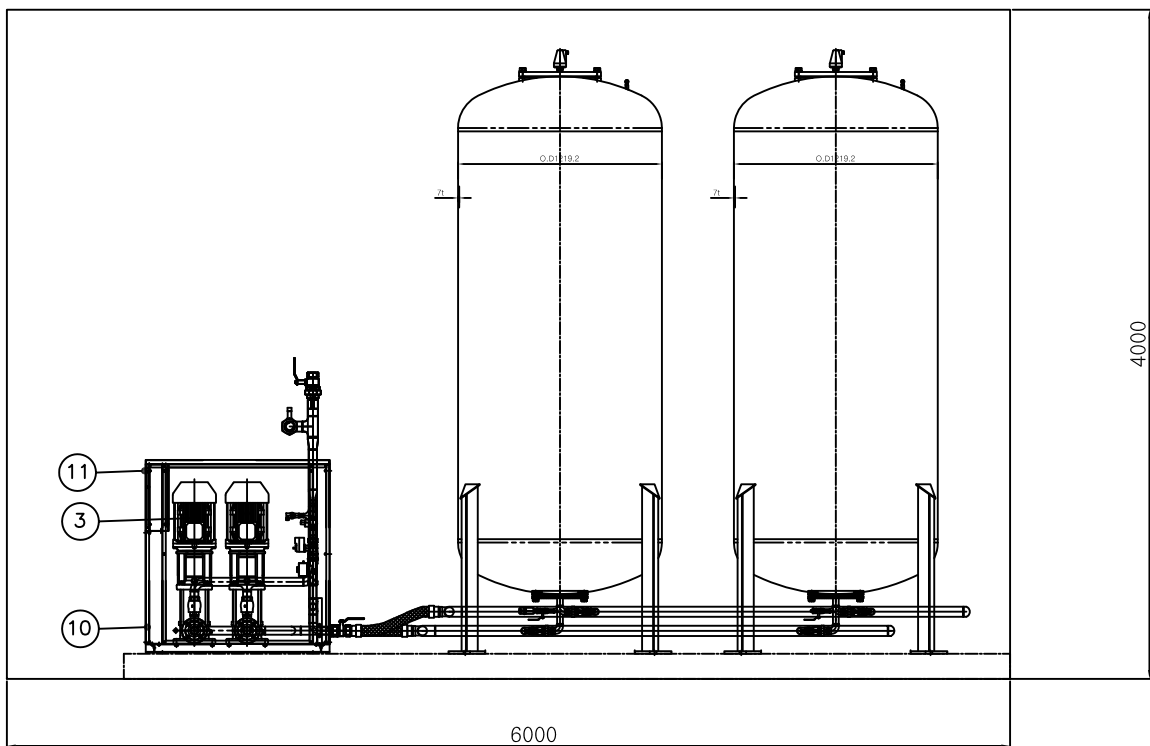
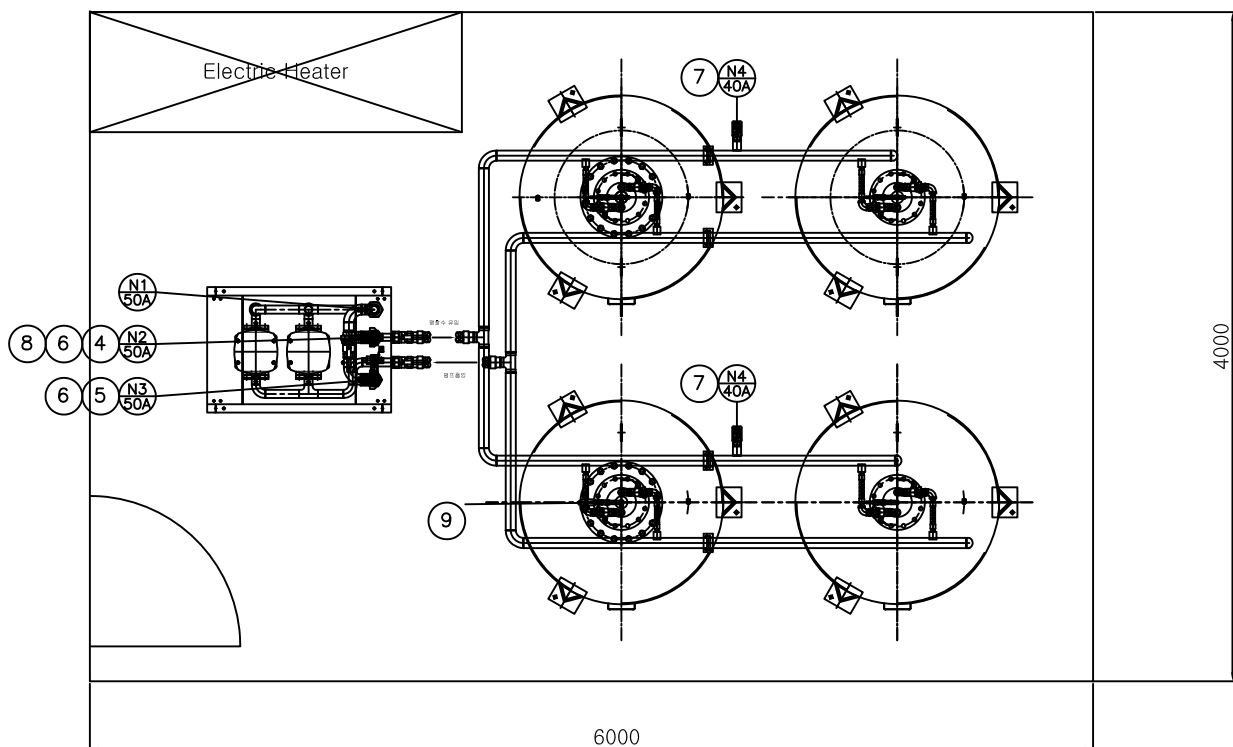
MARK	SERVICE	SIZE	Q'TY	PROF TO FACE	REMARK
N1	팽창수환수관	50A	1	PT	
N2	팽창수관	50A	1	PT	
N3	보충수관	50A	1	PT	
N4	DRAIN	40A	1	PT	

NO.	DESCRIPTION	MATERIAL	Q'TY	SIZE	REMARK
1	EXPANSION TANK	SS400	4	3000L	
2	BLADDER	BUTYL	4	3000L	
3	PUMP & MOTOR	-	2	5.5 kW	
4	FLOW CONTROL V/V	BRASS	1	40A	
5	PRESSURE REDUCING V/V	BRASS	2	20A	
6	SOLENOID V/V	BRASS	2	32A	
7	MOTOR OPERATING V/V	BRASS	2	40A	
8	PRESSURE TRANSMITTER	-	1	20kg/cm ² G	4~20mA
9	LEVEL TRANSMITTER	-	1	1 kg/cm ² G	4~20mA
10	CASE, BASE	SS400	1		
11	CONTROL PANEL	-	1		
12	AIR ELIMINATOR	BRASS	4	15A	



보충수 연결방법

CONTROLLER 정면



NO	DESCRIPTION	MAT'L	Q'TY	SIZE	PART NO.	REMARK
		NAME		비례제어형 팽창기수분리기 FX-3000Lx4EA / FA-22105, 22108		
SCALE	1/	DESIGN	CHECK	CHECK	APPR	TIT.PRJ
UNIT	mm inch	L.G.B		K.H.S	L.S.K	DWG NO.
DATE	2015.07.22					2-TFNV-030x4-08-00
						REV. NO.
						0
						SHT. NO.

1 2 3 4 5 6 7 8